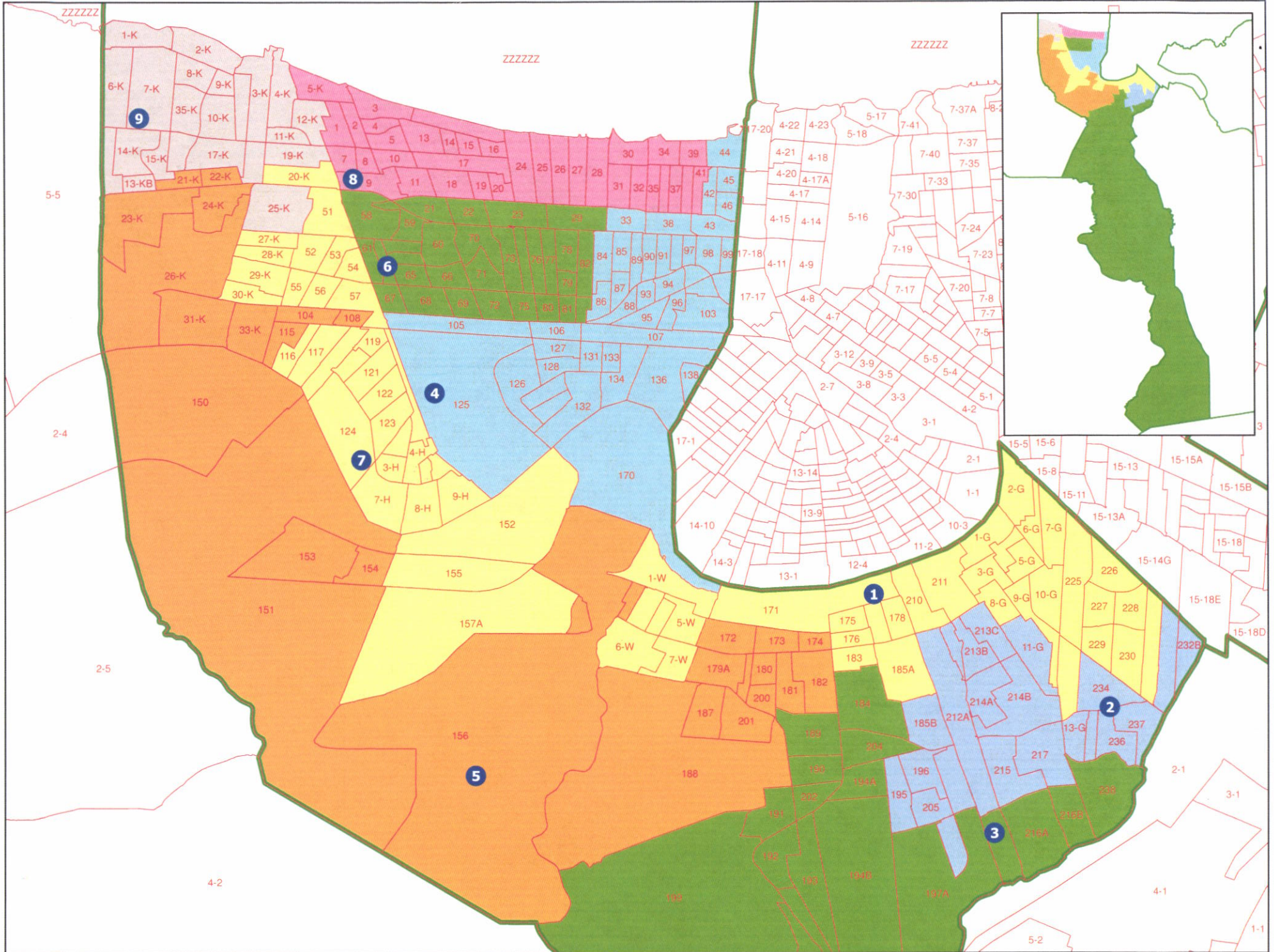


Jefferson Parish School Board Plan Modified



Plan Statistics

Plan: Jefferson Parish School Board Plan Modified

<u>Districts:</u>	<u># of Members</u>	<u>Actual Population</u>	<u>Ideal Population</u>	<u>Absolute Deviation</u>	<u>Relative Deviation</u>
District 1	1	48,635	48,061	574	1.194%
District 2	1	47,530	48,061	-531	-1.105%
District 3	1	48,842	48,061	781	1.625%
District 4	1	47,289	48,061	-772	-1.606%
District 5	1	48,353	48,061	292	0.608%
District 6	1	48,194	48,061	133	0.277%
District 7	1	47,199	48,061	-862	-1.794%
District 8	1	47,923	48,061	-138	-0.287%
District 9	1	48,587	48,061	526	1.094%

Grand Total:	9	432,552	432,549	
---------------------	----------	----------------	----------------	--

Ideal Population Per Member:	48061		
Number of Districts for Plan Type:	9		
Range of District Populations:	47,199	to	48,842
Absolute Mean Deviation:	183		
Absolute Range:	-862	to	781
Absolute Overall Range:	1,643		
Relative Mean Deviation:	1.07%		
Relative Range:	-1.79%	to	1.63%
Relative Overall Range:	3.42%		

<i>Ideal - Actual:</i>	-3
<i>Remainder:</i>	3
<i>Unassigned Population:</i>	0